

BS10-72

SOLAR PANEL

DESCRIPTION

Big Shine Energy is proud to be the trusted partner for your new Solar PV electric system. The heart of your system is our BS10-72 monocrystalline module (solar panel) which combines outstanding durability and performance. Our BS10-72 series panels pump out a maximum rated power of 365 to 380 Watts per panel and we guarantee a positive power tolerance of + 5 Watts for every panel. When you install Big Shine Solar panels you're building on 26 years of Solar PV experience – our development team built its first modules in 1994! The BS10-72 has been rigorously tested to assure years of reliable performance. The IEC standard for mechanical load is 245 kg/m². Our panels are qualified to more than double the IEC requirement. Snow load tested to 5,400 Pa (113 lbs. per square foot), Wind load tested to 2,400 Pa, and hail impact tested to 30.7 m/s (69 miles per hour), our panels are robust. Environmental resistance, verified by TÜV Rheinland, includes testing with high salt mist and ammonia exposure. Our industry-leading 12-year product warranty reflects our confidence in our product. PID, or potential induced degradation, reduces module output over time. The monocrystalline BS10-72 has enhanced PID resistance; we warrant that the power output will not change by more than 0.7% per year for 25 years. Big Shine BS10-72 panels are certified to IEC 61215, 61730, and UL 1703.

APPLICATIONS

Industrial, Commercial

SPECIAL FEATURES



Enhanced External Load/Impact

Snow Load: 5,400 Pa
Wind Load: 2,400 Pa



PID Resistance

Enhanced Potential Induced Degradation Resistance



Fire Safety

Spread of Flame Class A
Burning Brand Class C



Higher Output Power

0~+5Wp
Higher than rated power



Excellent Performance Under Low Light Conditions

Cloudy days, mornings and evenings

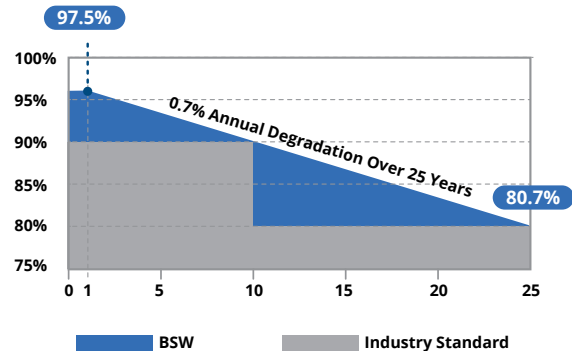


Various Options Available

Black or Silver Frame



WARRANTY



BS10-72

SOLAR PANEL

ELECTRICAL SPECIFICATIONS

STC (Irradiance 1,000W/m2, module temperature 25°C, AM=1.5)	BS365M-10	BS370M-10	BS375M10	BS380M-10
Rated Power (Pmax)	365W	370W	375W	380W
Voltage at Pmax (Vmp)	39.4V	39.8V	40.2V	40.6V
Current at Pmax (Imp)	9.25A	9.29A	9.32A	9.36A
Warranted Minimum Pmax	365W	370W	375W	380W
Short-Circuit Current (Isc)	9.74A	9.76A	9.79A	9.81A
Open-Circuit Voltage (Voc)	47.2V	47.5V	47.7V	47.9V
Module Efficiency	18.7%	19.0%	19.2%	19.5%
Operating Module Temperature	-40° C to + 85° C			
Maximum System Voltage	1,000V			
Fuse Rating	15A			
Maximum Reverse Current	20.25A			
Power Tolerance	0~+5W			

MECHANICAL SPECIFICATIONS

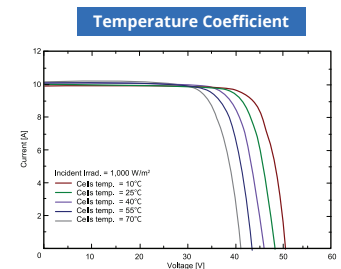
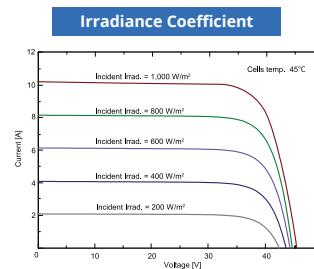
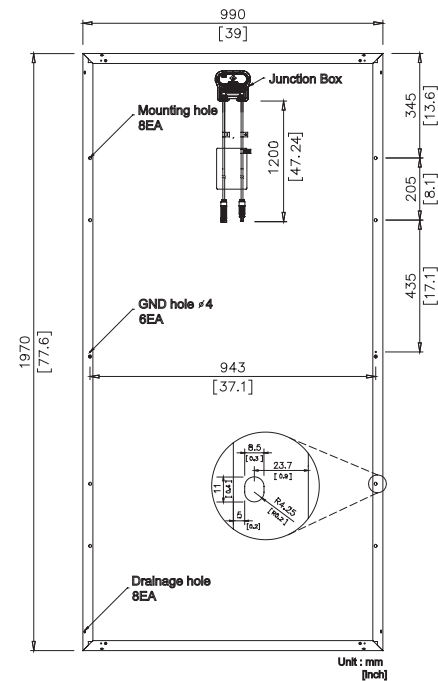
Solar Cells	Monocrystalline Cells 156.75x156.75mm
Number of Cells	72 Cells (6x12 Matrix)
Dimensions	1,970 x 990 x 40mm
Front Load	5,400Pa
Rear Load	2,400Pa
Weight	23kg
Glass	3.2mm High-Transmittance Low Iron Tempered Glass
Frame	Anodized Aluminum Frame (Silver / Black)
J-Box	≥ IP67 with 3 bypass diodes
Output Cables	PV Wire (PV1-F), 12AWG (4mm²), Cable Length:1,200mm
Connectors	MC4 Original, Compatible

TEMPERATURE CHARACTERISTICS

Temperature coefficient of Isc	0.046% / °C
Temperature coefficient of Voc	-0.282% / °C
Temperature coefficient of power	-0.394% / °C
NOCT (Tair 20°C; Irradiance 800W/m²; Wind 1m/s)	45±2 °C

PACKING CONFIGURATION

Container	20'	40'
Modules Per Pallet	27 pcs	27 pcs
Pallets Per Container	9 pallets	22 pallets
Modules Per Container	243 pcs	594 pcs



Big Shine LED is an LED lighting manufacturer, a division of technology company **Big Shine Worldwide, inc.** With global manufacturing centers for continuity of supply, Big Shine LED designs lighting fixtures with premium components that meet international certifications.